

Rapid

Pasture harrow

Enhances grassland and feed quality



Mowing technology

Forage harvesting

Mulching technology

Tillage

Cleaning

Winter service

Transport

Special applications



Optimal maintenance of meadows at the start of vegetation enhances the same and increases the forage quality.



The pasture harrow allows for maintenance, which enhances meadows and increases the forage quality when used in spring.

On the one hand, accumulations of loose ground material (mounds, etc.) are levelled, which has a positive effect on the tool life of the blades in subsequent work steps, primarily during mowing.

On the other hand, organic material and residues (dung, dried manure, etc.) are distributed and crushed. This promotes and accelerates rotting, thereby reducing the risk of feed contamination.

In addition, it promotes tillering and stimulates certain plants in the grassland.



OVERVIEW OF MODELS AND FEATURES

Type	1708	1706
Total width	203 cm	303 cm
Working width	200 cm	300 cm
Frame	WS200: one-piece	WS300: three-piece, folding mechanism
Net	rotatable, intensive or gentle	
Scraper bars	3	
Guide	Guide runners and ground adjustment mechanism	
Weight	144 kg	187 kg
Connection flanges	78/80 mm	

The keys to success

- Enhancement of grassland stocks by carefully tearing and scraping the turf
- Promotion of growth by stimulating various plants
- Reduced forage contamination by spreading and crushing organic materials
- Rotatable netting for either intensive or gentle cultivation of green areas
- Simple manoeuvring and full-surface cultivation on cropped terrain by means of a mechanism for ground adaptation
- Longer service life for cutting blades during subsequent work step
- Easy and convenient transport thanks to the overall width of less than 2.10 m (with WS200) and collapsible (with WS300) and attachment points for load securing

Preparation for subsequent work steps in the overall procedure

Three scraper strips reliably level accumulations of loose ground material (mounds, molehills, etc.). This minimises the risk of forage contamination and increases tool life for subsequent work steps.

Organic residual material (dung, dried manure, etc.) is collected, crushed and distributed by scraper bars and netting, so that it decomposes more quickly. This minimises the risk of forage contamination.

Ground adjustment mechanism



In working position, pasture harrow floating



In transport or loading position, pasture harrow fixed

Ground adjustment mechanism



The ground adjustment mechanism ensures full-surface cultivation and easy manoeuvring on rugged terrain.

The pendulum can move in the slot and respond to uneven terrain.

The ground adjustment mechanism can be locked for loading or for coupling/decoupling operations.

Good guide characteristics

The guide runners ensure that the attachment is optimally guided on terrain and prevent the frame from digging in or getting stuck on obstacles.

Default setting

The default setting of the height and inclination of the connecting piece enables mounting on all single-axle walk-behind tractors with different attachment heights or wheels.

Netting that can be used on both sides

The netting consists of rings and stars and represents the heart and main work tool of the pasture harrow. The stars are shaped differently and have simple webs on one side for a gentle cultivation. On the other side, tips are arranged to allow intensive use. The netting can be removed and rotated with just a few steps.



Lifting, loading, securing
Crane eyelets and tabs for threading tension belts enable easy hanging and reliable load securing.



Towed attachment
Due to the conceptual structure of the pasture harrow, it is possible to work comfortably trailing/pulling in the forward direction.



The multi-piece frame version offers additional properties. During application, the individual frame sections adapt well to the terrain, even on hilly surfaces.



Stars with webs and tips, can be used on both sides



Transport and handling
Thanks to the folding mechanism, a narrow overall width and thus an interesting transport dimension can be achieved. The use of the optional chassis greatly simplifies handling.

Made for mountain meadows

Thanks to the conceptual design and the arrangement of the turning point, the attachment is suitable for use on mountain meadows. The design allows maximum ground adjustment and comfortable work in combination with a single-axle walk-behind tractor.

Pasture harrow

Overview of types and compatibility

WALK-BEHIND TRACTOR MODEL			REX	MONDO M091	MONDO M141	KIPOS M141	URI E041	SWISS	MONTA M141	MONTA S141	MONTA M161	MONTA S161	MONTA M231	MONTA S231	VAREA M141	VAREA S141	VAREA M161	VAREA S161	VAREA M231	VAREA S231	ORBITO	
Attachment name	Art. no.																					
Pasture harrow WS200	1708		-	-	-	-	-	-	•	•	•	•	•	•	•	•	•	•	•	•	•	•
Pasture harrow WS300	1706		-	-	-	-	-	-	-	-	•	•	•	•	-	-	•	•	•	•	•	•



With the optional seeder holder, a commercially available seeder can be set up and a re-sowing or over-sowing can be applied in the same operation.



The result: Prepared meadow for cutting use

Main areas of application



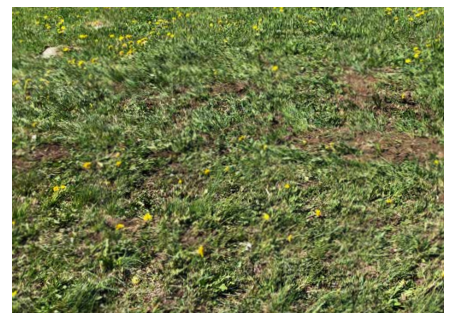
The rapid unit combination with the pasture harrow can be used for gentle or intensive applications on grassland thanks to the rotatable netting.

The main areas of application are:

- Mountain agriculture
- Agriculture
- Grassland



Uncultivated



Cultivated