

Rapid

Rapid VAREA

Multi-functional all-rounder
for all four seasons



Mowing technology

Forage harvesting

Mulching technology

Tillage

Cleaning

Winter service

Transport

Special applications



Rapid VAREA – compact, easy to operate single-axle walk-behind tractor for local authorities, green/paved area maintenance, agriculture, gardening and landscaping.

The powerful Rapid Varea is designed for varying types of work. Thanks to the handlebar which can be swivelled and rotated to the side, work is even easy to carry out around obstacles.

The Rapid Soft handlebar bearing provides the operator with maximum comfort and therefore also non-tiring and light work, even for long periods.

Technical data						
Model designation	VAREA M142	VAREA S142	VAREA M162	VAREA S162	VAREA M231	VAREA S231
Engine	Subaru Robin EX40		Briggs & Stratton			
Type	4-stroke OHV petrol engine, air-cooled					
Cubic capacity	404 ccm		480 ccm		627 ccm	
Cylinders	1		2		2	
Max. power	14 HP / 10.3 kW		16 HP / 11.8 kW		23 HP / 16.9 kW	
Starter	Recoil starter					
Weight	187 kg (without wheels)	195 kg (without wheels)	196 kg (without wheels)	204 kg (without wheels)	205 kg (without wheels)	214 kg (without wheels)
Travel drive and steering actuation	Mechanical	Sensor-based	Mechanical	Sensor-based	Mechanical	Sensor-based
Suitability for slopes	up to 100%					
Travel drive	Hydrostatic, continuously variable					
Travel drive clutch	Electromagnetic clutch					
Speed	Forwards: 8 km/h, reverse: 4 km/h					
Power take-off shaft	1000 rpm at an engine speed of 3600 rpm					
PTO shaft clutch	Electromagnetic clutch					
Steering	Active handlebar or hand lever steering, switchable, with zero-turn function					
Free wheeling selection	Mechanical free wheel, towable					
Connection flange	Tool-free rapid change system Ø 78/80					
Handlebar	Adjustable to 11 different height settings without tools					
Handlebar lateral adjustment/rotation	can be swivelled to the side without tools (0 and ±22°), lockable in 3 positions	can be swivelled to the side without tools and rotated by 232°, lockable in 6 positions	can be swivelled to the side and rotated (0 and ±22°), lockable in 3 positions	can be swivelled to the side without tools and rotated by 232°, lockable in 6 positions	can be swivelled to the side without tools (0 and ±22°), lockable in 3 positions	can be swivelled to the side without tools and rotated by 232°, lockable in 6 positions
Handlebar ends	Individual height adjustment without tools					
Immobilisation brake	Mechanical, acts on both wheels					

Model M and S



The models differ through their mechanical and sensor-based control of the pumps. The forces necessary for turning the rotary grip are lower for the S models; it is also possible to influence the driving behaviour by the control program.

The Varea success factors

- Continuously variable travel drive, no need for clutch operation and gear shifting
- Active hand lever or handlebar steering, switchable, for effortless and precise work
- Zero-turn function for soil-conserving turning manoeuvres in a confined space
- Optimised device balance for effortless working with heavy attachments
- Applications with narrow attachments possible through narrow flange dimensions

Overview of models VAREA M142, S142, M162 and S162

The basic machines are suitable for miscellaneous applications in the local authority sector, green/paved area maintenance, gardening and landscaping.

The walk-behind tractors mainly stand out because of their narrower track width for narrower attachments and a centrally positioned axle that makes it easier to lift out heavy attachments. Models M142 and S142 and also Varea M162 and S162 differ in terms of the power of the combustion engine and also the mechanical or sensor-based actuation.

VAREA M142 and M162



Success factors for M models

- Tried and tested operating elements with mechanical actuation (wire cable)
- Swivel handlebar for operation next to obstacles

VAREA S142 and S162



Success factors for S models

- Low forces on the operating elements through electronic actuation (sensors)
- Reaction behaviour can be changed (calibration process)
- Swivelling and rotating handlebar for easier coupling processes and applications
- Rotary grip remains in set position during forwards travel
- No reverse direction for hand lever steering during return trip

Overview of models VAREA M231 and S231

The Rapid Varea, which is equipped with a 23 HP engine, is ideal for applications in local authority and public sectors, agriculture, gardening and landscaping.

Features such as handlebar lateral adjustment/rotation as well as switchable active hand lever or handlebar steering have been installed in the Rapid Varea 231 as standard.

VAREA M231



VAREA S231



Success factors

- Work is made easy and comfortable due to a second independent, switchable electromagnetic clutch for the PTO shaft drive
- Low vibrations and oscillations for the operator thanks to the Rapid Soft handlebar bearing
- Tool-free quick change system for attachments
- Height adjustment of the handlebar and the handlebar ends for individual settings and ergonomic work
- Good engine for high-performance work
- Wide range of attachments for universal and year-round use

Cockpit S models¹

¹ Only applies to the Rapid Varea S

Second dead man handle¹

The second dead man function is integrated in the rotary grip, allowing one-handed operation temporarily.



Rotary grip

Continuously variable forward or reverse travel without any need for clutch operation and gear shifting.



Accelerator lever

For setting the motor speed.

Immobilisation brake

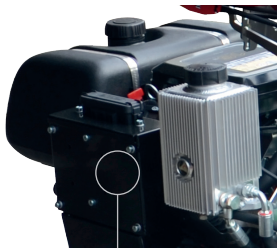
The immobilisation brake acts mechanically on both wheels, ensuring complete safety and peace of mind.



Cockpit M models

Engine

Easy-start powerful petrol engine that represents the state of the art in terms of performance and emissions.



Controller¹

The controller is protected by the battery compartment.



Power take-off operation

The power take-off, which is mechanically coupled to the engine speed, can be easily switched on and off at the touch of a button.



Handlebar end adjustment

Knurled screws allow you to adjust the handlebar ends quickly and without tools so that you can work safely and ergonomically on difficult terrain whatever the situation.

Handlebar and hand lever steering

Depending on the working situation, you can choose to carry out steering manoeuvres precisely and easily using handlebar or hand lever steering.



Lifting eye

For safe lifting and fastening.

Quick change system

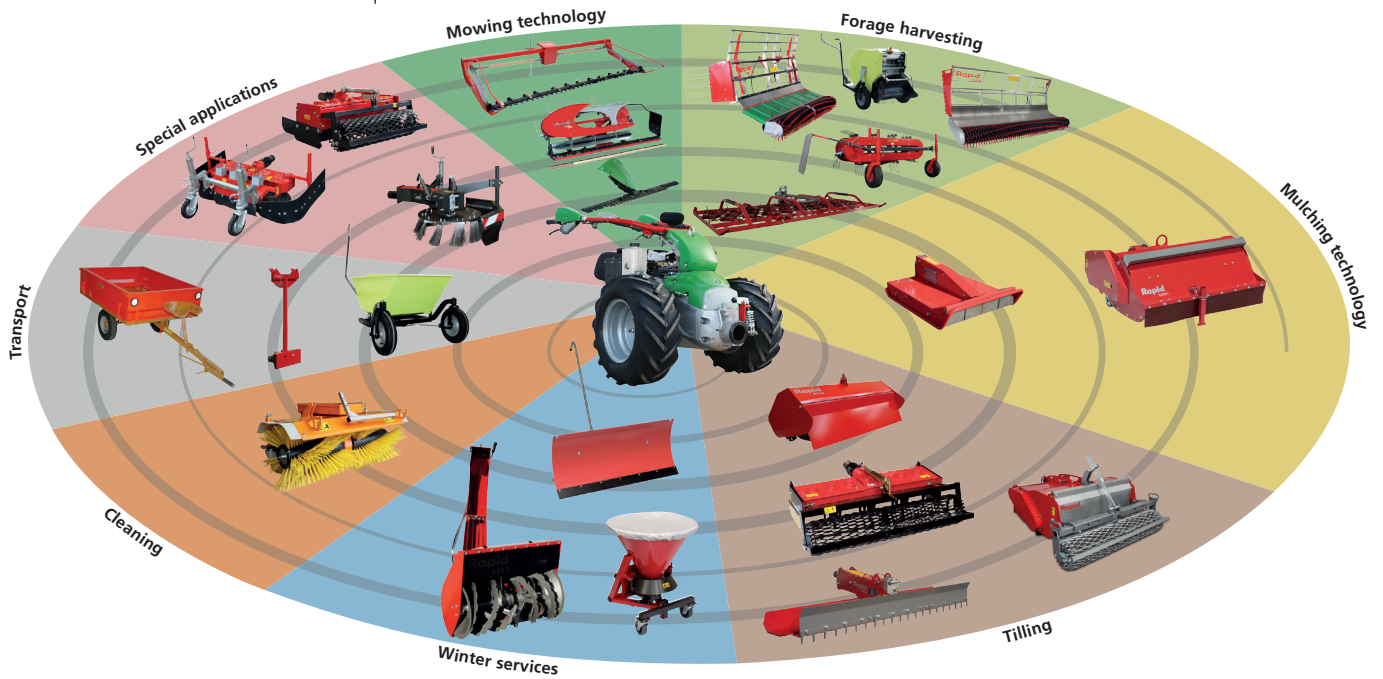
Allows you to change the various attachments in a flash without the need for tools.

Tyres

Flexible range of wheels and combination options tailored to your needs for optimum traction according to the specific application.

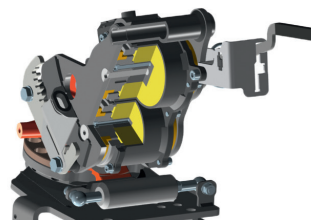
Zero-Turn steering

Wheels that turn in opposite directions allow soil-conserving turning manoeuvres in the tightest of spaces.



Handlebar lateral adjustment/rotation

With all models, the handlebar can be adjusted laterally without the need for tools. This makes it easy to work alongside obstacles or under bushes. With the S models, the handlebar can in addition be turned by 232° and locked in 6 positions



Rapid Soft handlebar bearing

The revolutionary Rapid Soft handlebar bearing, which is decoupled from the walk-behind tractor unit, reduces vibrations and oscillations to an incomparable degree and offers maximum ease of use especially with oscillating attachments.

